



Date: 15.10.2018

## NOTICE

All the students of Electronics & Telecommunication Engineering Department of MITCORER, Barshi is here by informed that the "Industrial Visit to Reliance Gas Transportation Infrastructure Ltd., Barshi" is scheduled on 17.10.2018 (Wednesday). Attendance is mandatory for the visit.

Visit Coordinator  
Department of E&TC Engg.

HOD  
Department of E&TC Engg.  
**Department of E & TC Engineering**  
MIT College of Railway Engineering  
Jamgaon, Barshi - 41

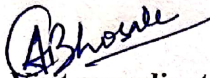
**MIT COLLEGE OF RAILWAY ENGINEERING AND RESEARCH**

BARSHI-413401

**DEPARTMENT OF ELECTRONICS & TELECOMMUNICATION ENGINEERING****Industrial visit Report****Date: 17<sup>th</sup> October 2018**

Visit to Reliance Gas Transportation Plant, Barshi

In order to give exposure to industrial operations, MAEER's MIT College of Railway Engineering & Research, Barshi organized an industrial visit to Reliance Gas Transportation Infrastructure Ltd. (RGTIL) located at Jamgoan, Barshi, on 17<sup>th</sup> October, 2018. The purpose of this visit was to clear the technical concepts through actual on-field training. The remarkable interaction with Mr. Muthookumar from RGTIL made the students aware of the safety precautions which are to be followed during the visit. The students had very industrious time with him. They witnessed one of the biggest compressors in India. First-hand experience of programming of the gas transportation enhanced their knowledge. They got the practical knowledge of the things like compressor stations, gas transportation, gas pipelines etc. Also they understood the procedure fire-fighting system in case if emergency.

  
Visit co-ordinator

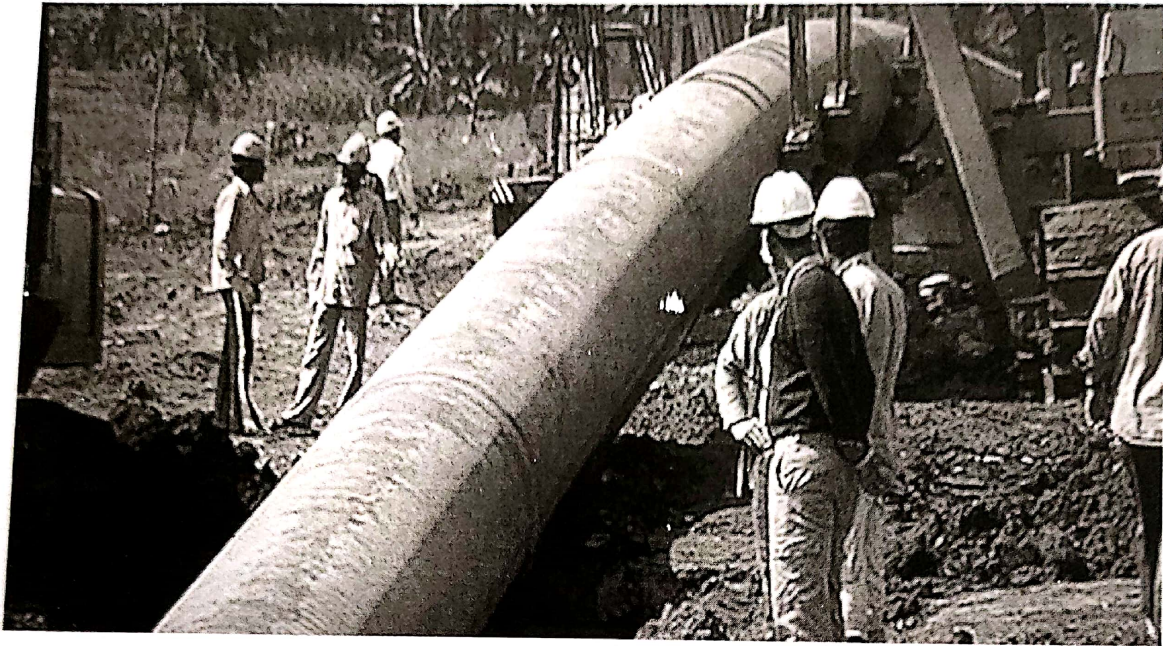
  
HOD

Department of E & TC Engineering  
MIT College of Railway Engineering & Research,  
Jamgaon, Barshi - 413401.



# MIT COLLEGE OF RAILWAY ENGINEERING AND RESEARCH

BARSHI-413401





Date: 19.10.2018

## NOTICE

All the students of Electronics & Telecommunication Engineering Department of MITCORER, Barshi is here by informed that the "Diesel Loco Shade, Ghorpadi ,Pune" is scheduled on 20.10.2018 (Saturday). Attendance is mandatory for the visit.

Visit Coordinator  
Department of E&TC Engg.

HOD  
Department of E&TC Engg.

Department of E & TC Engg.  
MIT College of Railway Engineering & Res  
Jangach, Barshi - 413481.

# Report on

## “Railway Workshop Visit at Ghorpadi”

As part of Curriculum of **Railway Engineering** of SE, Student Industrial visit was organized by **MAEER's MIT College of Railway Engineering & Research, Barshi** as to provide students the real insight of working procedure at **Railway Workshop Ghorpadi-Pune**. A batch of 26 students with Faculty Prof V. V. Bhosale, Prof. A. A. Pawar, Prof. Rohini Rankhamb and Prof. Shendage S. S. attended the workshop on 20<sup>th</sup> October 2018

### **About Railway Workshop Ghorpadi -**

**History-** It was established on 13 August 1981, the then railway minister Kamalapati Tripathi inaugurated the loco shed. It was planned under WP 1978 – 79 to home 60 locos. The shed was further extended to home 100 locos under WP 1981 – 82. Now it holds around 135 locomotives of which 63 locos are operational with mail express links, but now it holds almost 200 locomotives.

### **Work Details –**

In this Diesel Locomotive shed Major and minor schedules of Diesel Locomotives are carried out. The shed is ISO 9001:2000, ISO 14001:2004 and OHSAS 18001:2007 certified. The shed is divided into Light Schedule Repair Section, Heavy Schedule Repair Section, Heavy Repair (Mechanical), Heavy Repair (Electrical), Bogie Section, Machine Shop and Training Centre. The shed is located near Ghorpuri railway station and entrance of the shed is between a railway crossing gate.

### **Important facilities available:**

#### **Under floor wheel lathe for wheel turning:**

This is utilized for maintaining wheel profile, without removing wheel sets from locomotives. This saves a lot of time and effort which otherwise would have gone into it.

#### **Spectrography for analysis of lubricating oil:**

This is helpful in doing predictive maintenance. By this machine, lube oil of locomotives is analysed for various metallic traces which would have come into lube oil due to wear and tear. Any metallic trace showing unusual concentration indicates to the distressed condition of related component.

#### **DM water plant:**

The cooling water used in locos should have pH value within a specified range. This pH range is maintained with the help of DM water plant. The process used is ion exchange regeneration process.

#### **Water Load Box:**

This facility is utilized to test the horse power of locomotive by simulating online full load condition. The various parameters of locomotive are tested as per their standard values and any deviations are rectified.



**Discussion session with Railway Chief Instructors and MITCORER students**



**MITCORER Students at Diesel Loco-Shed, Ghorpadi-Pune.**